

# From Insight to Impact: Advancing AI Readiness in Nursing Practice

May 1, 2026

**Cheryl Denison BSN, RN, NI-BC**  
**Clinical Integration Director**  
**Mercy**





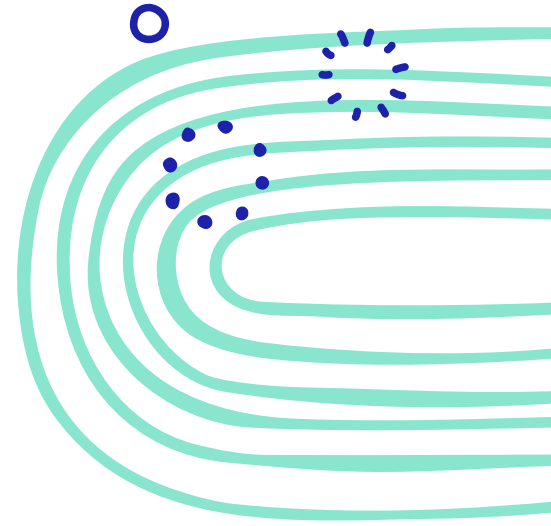
# Meet Our Speaker

Cheryl Denison, BSN, RN, NI-BC  
Clinical Integration Director  
Mercy



# Agenda

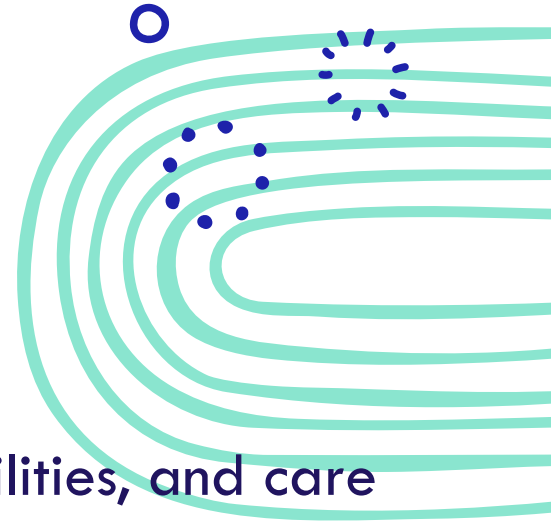
- Reshaping nursing roles and care delivery
- Workflow systems engineering and human-centered design
- Building readiness and confidence in a new environment of care
- Implementation strategy in nursing workflows
- Looking ahead



# Learning Objectives

After attending this session, participants will be able to:

- Analyze how artificial intelligence is reshaping nursing roles, responsibilities, and care delivery
- Evaluate strategies to increase nurse readiness and confidence when adopting AI tools
- Apply principles of workflow systems engineering and nurse engagement to ensure successful, scalable implementation





# Reshaping Nursing Roles and Care Delivery

## Enhanced Care Delivery

- Uplifting the science and profession of nursing

## Expanded Nursing Role

- Nurses now participate in the collaboration of new AI systems, data analysis and technology management to improve patient outcomes and monitoring

## Ethical and Education Responsibilities

- Nurses must address privacy, equitable access, and bias while pursuing ongoing education to upskill their knowledge about AI

# Workflow Engineering and Human Factors

## Methodology

- Design
- Building Trust

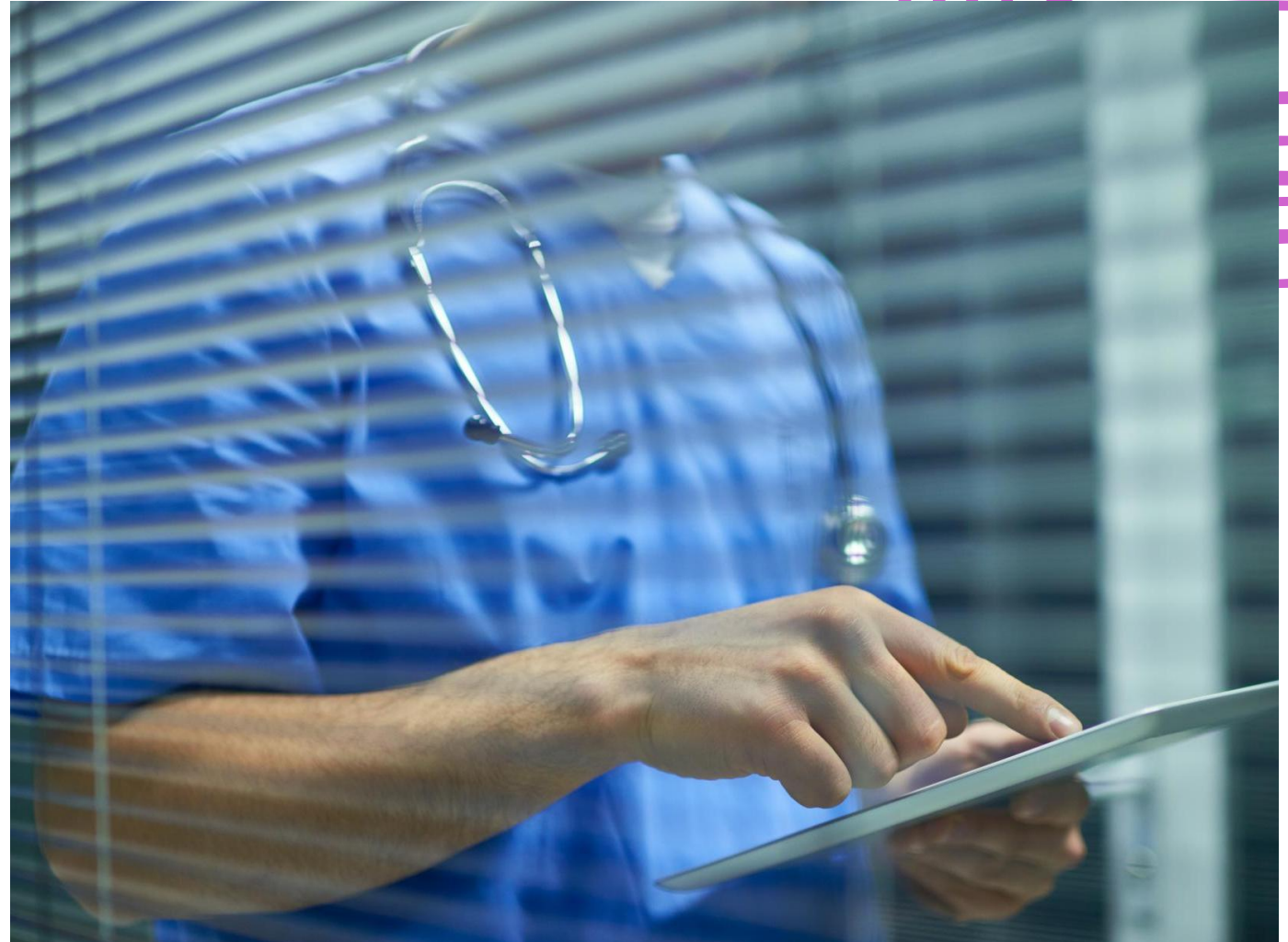
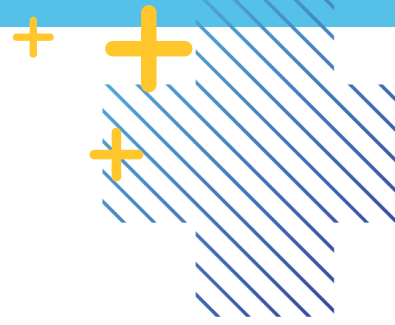


image courtesy of Microsoft Copilot365

# Building Readiness and Confidence for a New Environment of Care



- **Adaptive Leadership Style**
  - Digital innovation introduces rapid shifts in workflows, roles, and expectations
- **Effective Communication**
  - Less about having the right answer and more about facilitating the dialogue and reflection and iteration
  - Innovation doesn't just happen *to* people....but *through* them

# Implementation Strategy in Nursing Workflows

- This is NOT an Implementation
- Strategic Vision
- Transformative Thinking
- Creating a Culture of Possibility for Adaptation of New Environment of Care
- Demystifying what is AI

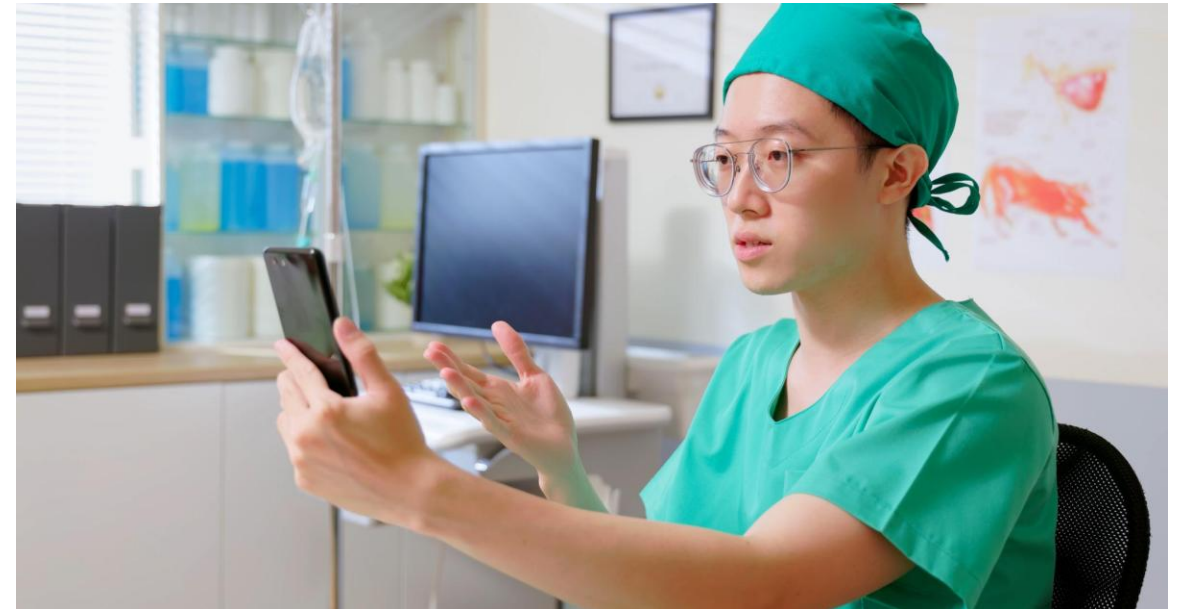


image courtesy of Microsoft Copilot365



# Fusion Team Approach

## Strategic Sponsor

Clinical Voice

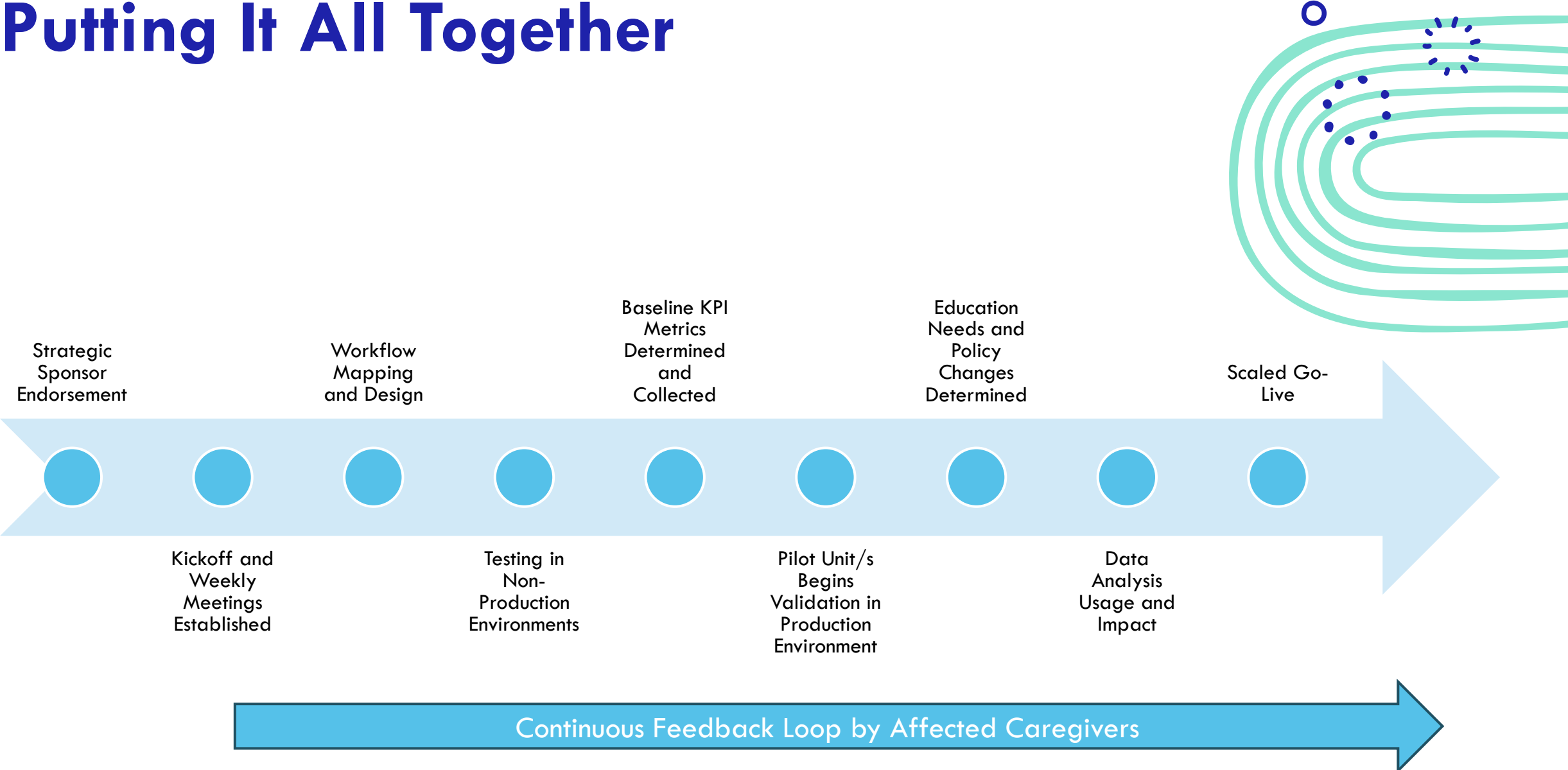
Operational Leader

Process Engineer

Internal Infrastructure

External Technology Partner

# Putting It All Together



# Looking Ahead.....

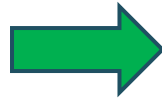


image courtesy of Microsoft Copilot365

# Q&A

Feel free to ask questions!

## Contact Information

[Cheryl Denison]: [cheryl.Denison@mercy.net] | [417-496-2578]

