

# Critical Care Review Tools: Using PDSA Pre- and Post- an EHR Go-Live

Danielle Perley, MSN, RN, NI-BC & Katie Hunter, MSN, RN, NI-BC

May, 30, 2025



Boston Children's

Where the world comes for answers



# Introduction

Transitioning Electronic Health Records (EHRs) to a new vendor poses various obstacles.

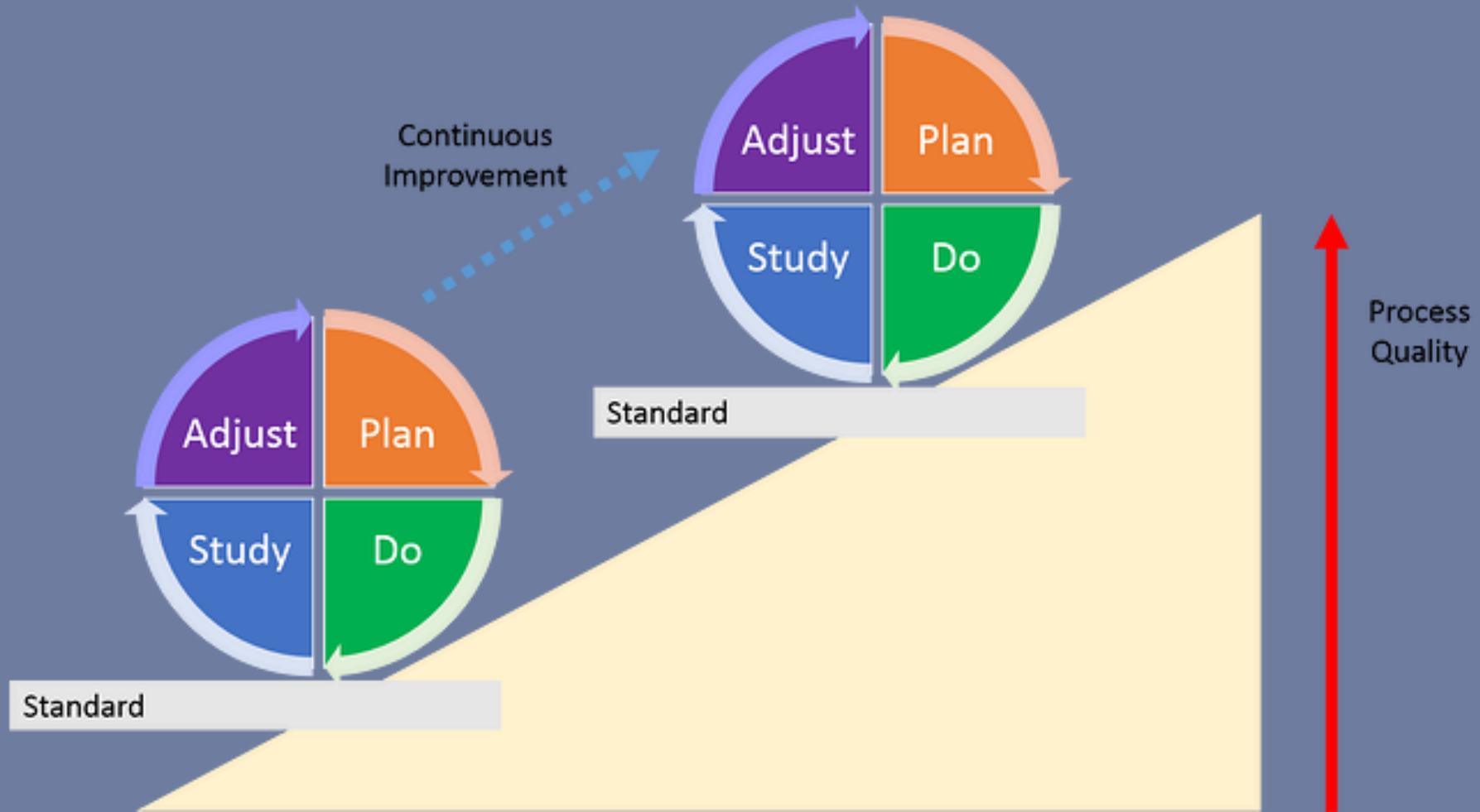
Institutions changing EHR vendors must maintain the same patient safety, care quality and patient experience ratings from their legacy system.<sup>1</sup>

Implementing an EHR which did not provide a critical care tool set required iterations of custom patient care tools, including aspects of legacy programs.

The Plan-Do-Study-Act (PDSA) Cycle helped the workgroup make targeted, high-value changes to the EHR from kick-off to optimization.<sup>2</sup>



# PDSA Refresher<sup>3</sup>



# Assessment/Improvement

Before  
Go-Live

Standardize Views Across Disciplines

ICU Glance Access

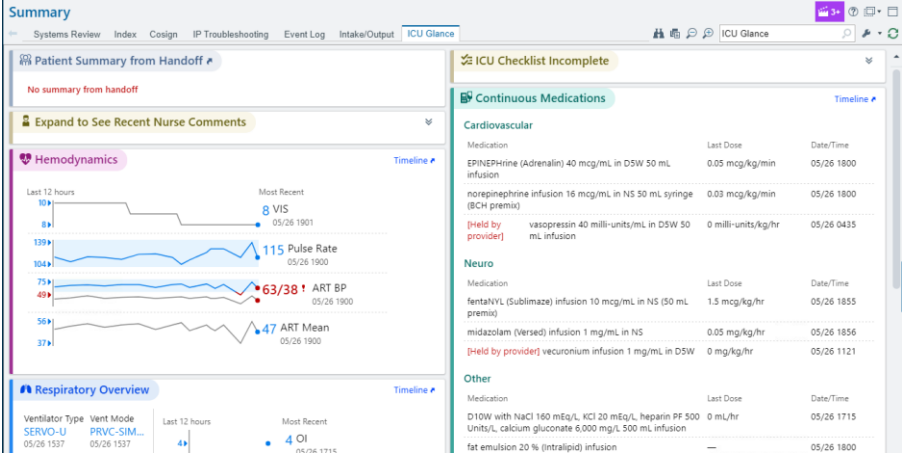
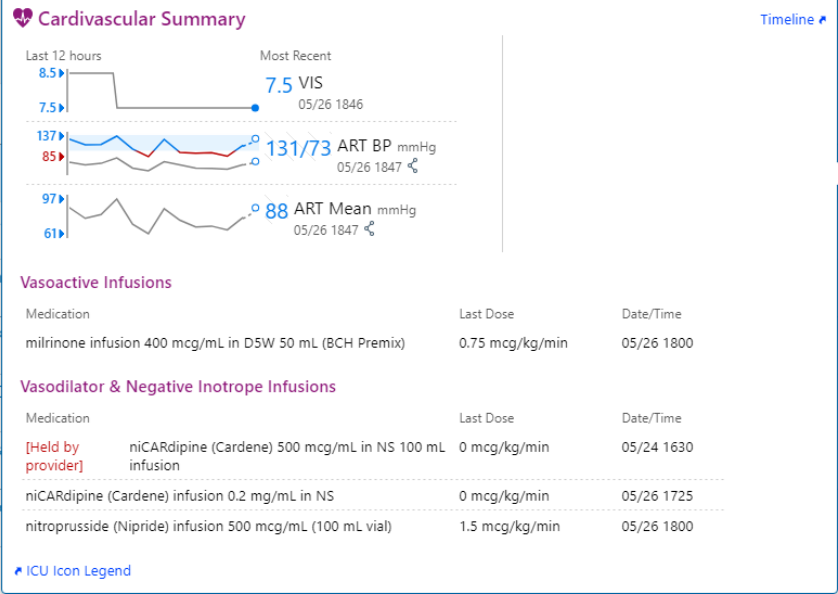
Timeline Report Views

Patient List Columns

Hand-Off Reports

Complex Vitals with Invasive  
Hemodynamic Monitoring

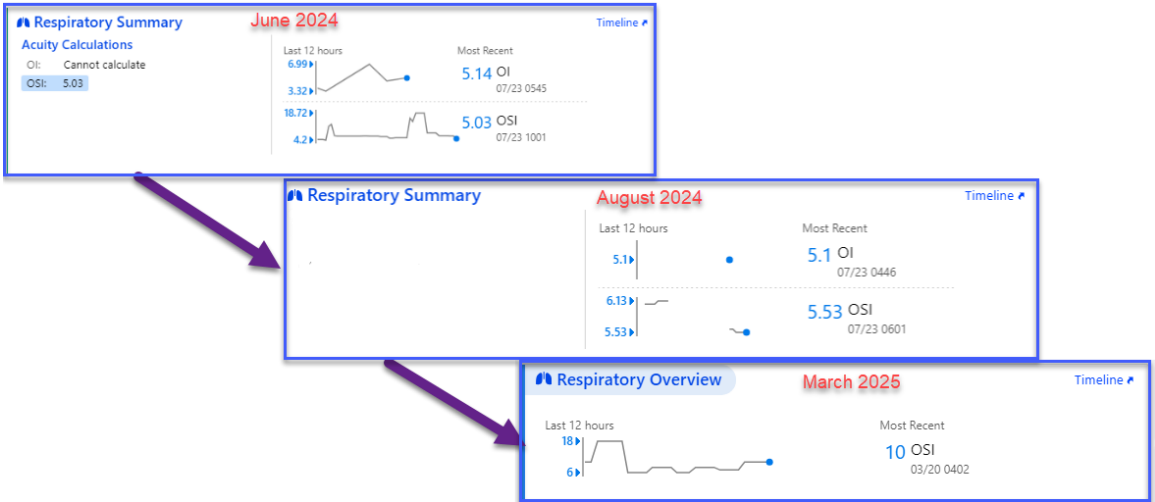
ICU Checklist



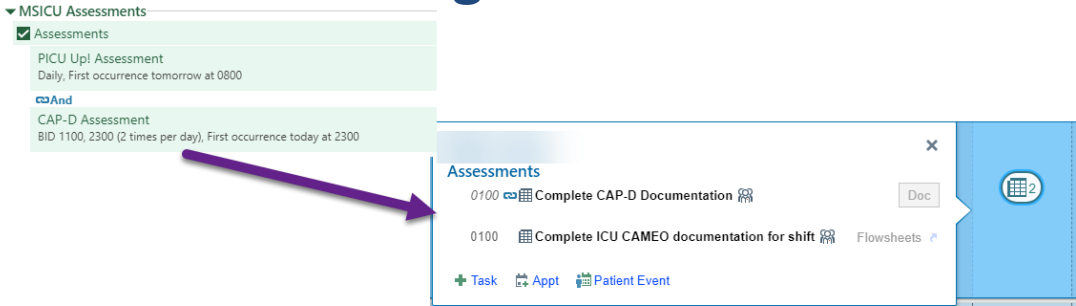
# Assessment/Improvement

Optimizations	Respiratory Summary Updates	Required auto-filing of device data
	Nurse Brain Tasks	PICU Up! CAPD
	Cameo ICU Assessment	
	New Pain & Sedation Widget in ICU Glance	
	Pacing Information in Cardiac Timeline	
	Imminent Arrival Medication Ordering	

## Respiratory Acuity Scores



## Nursing Brain Tasks



# Assessment/Improvement

## Optimizations

Respiratory Summary Updates  
Required auto-filing of device data

Nurse Brain Tasks  
PICU Up!  
CAPD

Cameo ICU Assessment

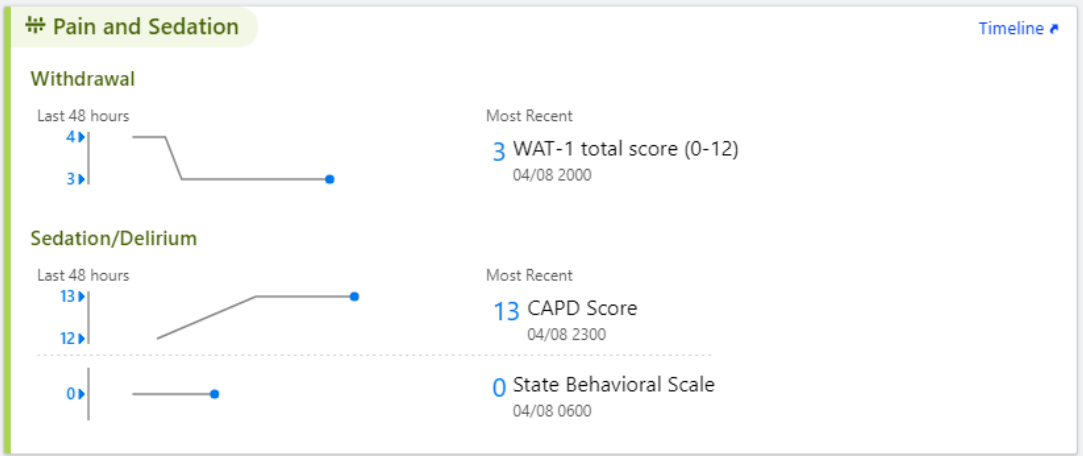
New Pain & Sedation Widget in ICU Glance

Pacing Information in Cardiac Timeline

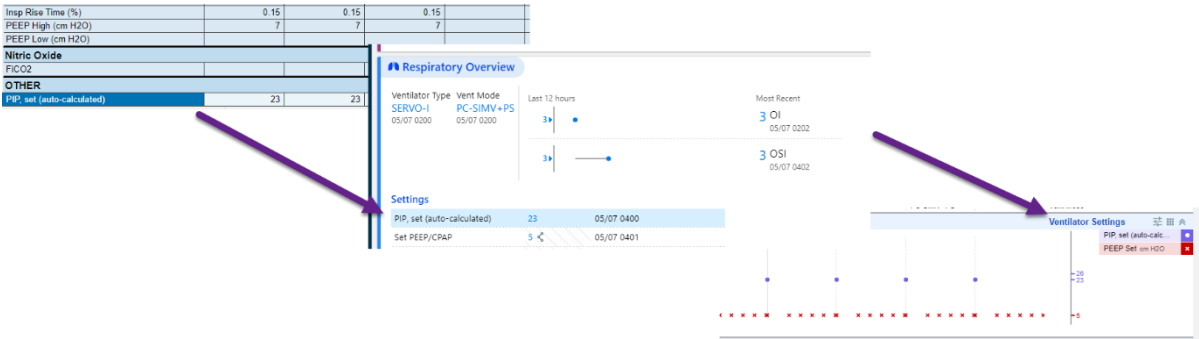
Imminent Arrival Medication Ordering

PIP, set (auto-calculated)

## Pain and Sedation Widget



## PIP, set (auto-calculated)



# Imminent Arrival Workflow

Double-click to enter admission medications

Indicates admission destination

★ Planned Pre-Admits 8 Patients					Refreshed 5 minutes ago  Search Current Locat...	
Dosing Weight (kg)	Place Orders for Pending Pre-admission	Patient	MRN		Unit	
—					LW ADMITTING	
—					LW 08 Mandell	
—					LW 07 Berthiaume	
—					LW 08 Mandell	

Double-click to enter patient's weight

*Other updates include adding medications to be released before patient admitted and pharmacy views to visualize arriving patients*



# Continued Work

## In Progress

- CCP Calculation Updates
- VTE Risk Assessment Checklist Changes
- Renal Risk Checklist Enhancement
- FEN Timeline Adjustments

## Future

- Optimized Note Templates
- Refinement of Ordersets Standardizing Across ICUs
- Additions to the Respiratory Timeline
- New Aquadex Documentation and Orders





# Discussion



# Acknowledgement

Thank you to my co-author, Katie Hunter, and clin doc analyst in the Critical Care workgroup who is responsible for building all the documentation that helps feed into the visualization tools.

The authors would like to extend our gratitude to the Critical Care Workgroup for their patience and persistence on this work. In addition, many thanks to the workgroup SMEs and chairs for their support in reviewing and testing updates. We'd also like to recognize Erica Whyte, Sr. IT Epic Analyst for her efforts in bringing auto-filing of device data live in system.



# References

1. Miake -Lye IM, Cogan AM, Mak S, et al. Transitioning from One Electronic Health Record to Another: A Systematic Review. Journal of General Internal Medicine. 2023 Oct 5;38.
2. Melnyk B, Fineout-Overholt E. Evidence-based practice in nursing & healthcare: A guide to best practice. 5th ed. Philadelphia: Wolters Kluwer; 2023.
3. Jacobson, Greg. PDSA Quality Improvement: A Scientific Method of Change. 2024 Jul 10, <https://blog.kainexus.com/continuous-improvement/improvement-disciplines/lean/pdsa/pdsa-quality-improvement>

